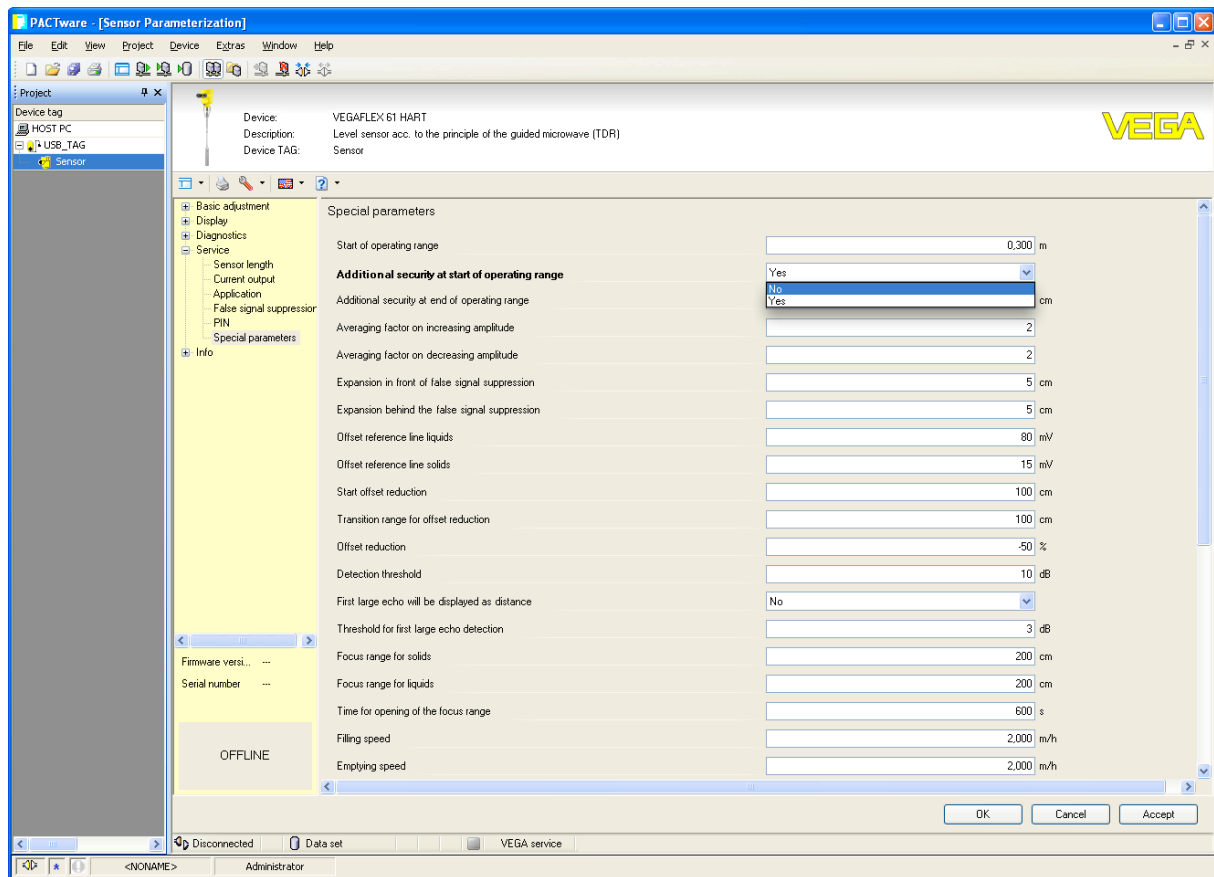


Ting vi pleier å gjøre med FLEXn

Ta bort feil i toppen



eller foreta en False signal suppression

The screenshot displays the PACTware [Sensor Parameterization] interface. The main window title is "PACTware - [Sensor Parameterization]". The menu bar includes File, Edit, View, Project, Device, Extras, Window, and Help. The left sidebar shows a tree view with "Sensor" selected. The main area displays the configuration for a "VEGAFLEX 61 HART" device, described as a "Level sensor acc. to the principle of the guided microwave (TDR)".

The "False signal suppression" section is active, with the subtitle "(Gating of false echoes)". It features a diagram of a cylindrical tank with a sensor probe and a yellow liquid level. Below the diagram, the "Activity to be carried out" is set to "Update". The "Sounded distance" is set to "0,00 m". An "Execute" button is visible below the distance field.

At the bottom of the window, the status bar shows "Disconnected", "Data set", and "VEGA service" options. The system tray at the very bottom indicates the user is "Administrator" and the system name is "<NONAME>".

Dersom avlesning ikke følger i bunn (ved fylling) settes wire lengden til det samme som måleområdet (0%).

