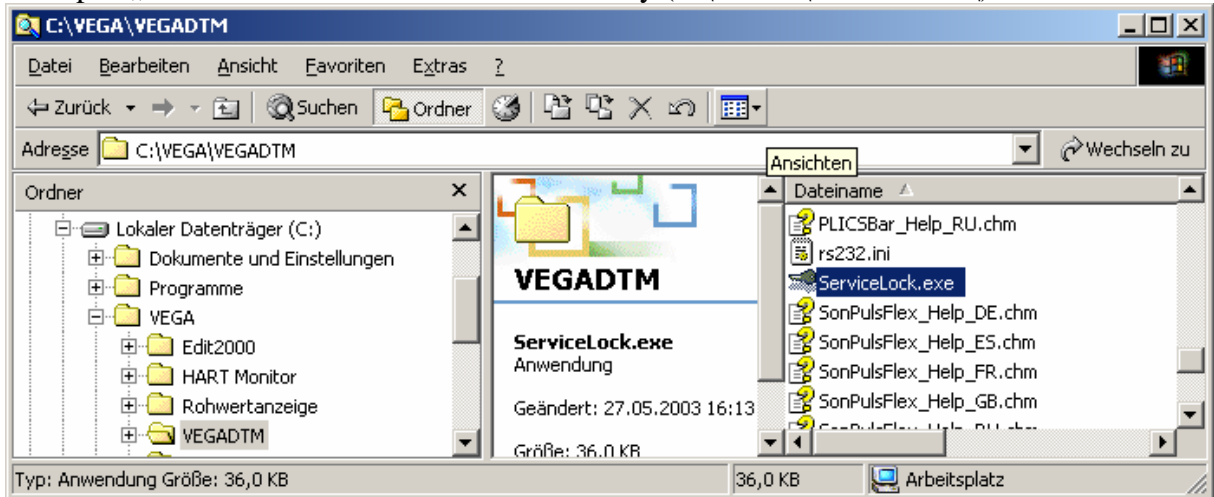


Electronics exchange with plics[®] sensors

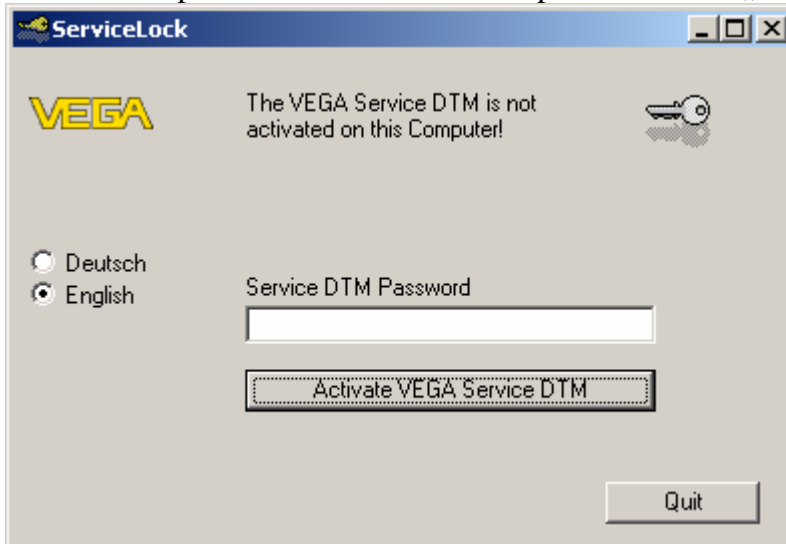
- 1.) **Software requirement:**
Service-DTM from DTM-Collection 10/2003

- 2.) **Activation of the service-DTM:**

- Open „ServiceLock.exe“ in the DTM directory (C:\VEGA\VEGADTM)



- Enter the password "servicedtm" and push the button „Activate VEGA Service DTM“



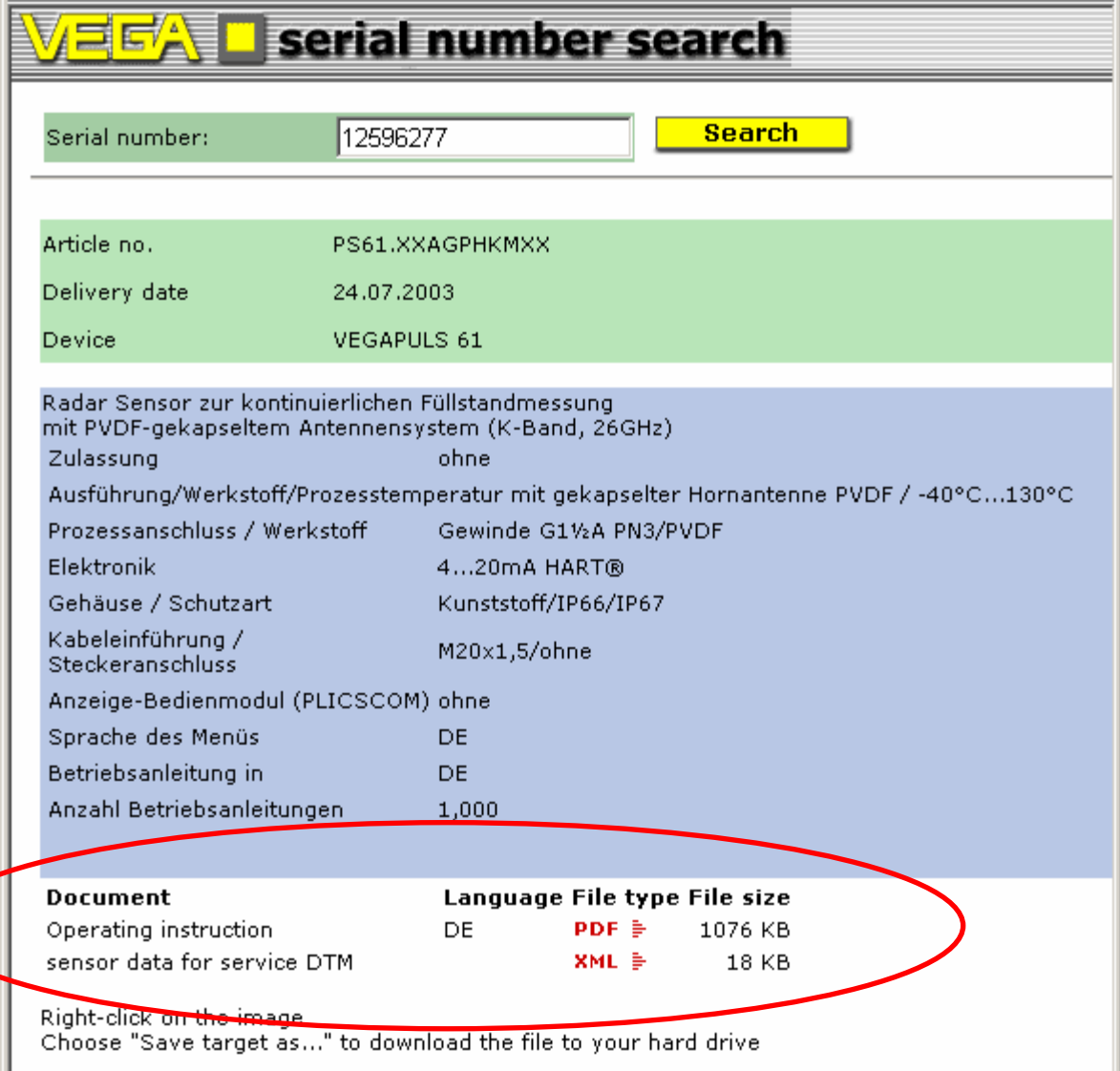
- Restart PACTware or reinitialise the instrument catalogue

3.) Exchanging the electronics:

- Switch off the power supply of the sensor
- Disconnect the connection cable
- Loosen the 2 screws (screwdriver for recessed head screws PH1) on the socket of the electronics and remove the electronics (if the electronics cannot be removed, connect a 10 cm long wire loop to terminal 1 and 8 and pull out the electronics)
- Check the housing on moisture, pollution, corrosion and damages (in case of moisture, pollution and corrosion you have to determine the reason and exchange housing parts, if necessary)
- Insert the new electronics of the same type and tighten it back on
- Connect the connection cables and switch on the power supply

4.) Providing instrument data

- Open the VEGA homepage in the Internet (www.vega.com) and move to „serial number search“
- Enter the sensor serial number (see type label on the sensor housing)



VEGA ■ serial number search

Serial number:

Article no.	PS61.XXAGPHKMXX
Delivery date	24.07.2003
Device	VEGAPULS 61

Radar Sensor zur kontinuierlichen Füllstandmessung mit PVDF-gekapseltem Antennensystem (K-Band, 26GHz)

Zulassung ohne

Ausführung/Werkstoff/Prozesstemperatur mit gekapselter Hornantenne PVDF / -40°C...130°C

Prozessanschluss / Werkstoff Gewinde G1½A PN3/PVDF

Elektronik 4...20mA HART®

Gehäuse / Schutzart Kunststoff/IP66/IP67

Kabeleinführung / Steckeranschluss M20x1,5/ohne

Anzeige-Bedienmodul (PLICSCOM) ohne

Sprache des Menüs DE

Betriebsanleitung in DE

Anzahl Betriebsanleitungen 1,000

Document	Language	File type	File size
Operating instruction	DE	PDF	1076 KB
sensor data for service DTM		XML	18 KB

Right-click on the image
Choose "Save target as..." to download the file to your hard drive

- Download der Sensordaten des Sensors und Speicherung der Datei **<Seriennummer>.xml** im Computer

- Alternatively to the download of the sensor data from the VEGA homepage, the <Seriennummer>.xml file exporting of sensor data can be also generated by a still functioning electronics; therefore follow the first two steps of the next chapter „Restore instrument data“ and then use the function „Options→Export data“

5.) Restore instrument data:

- Create a project in PACTware:
 - 4-20mA HART sensors:
 - VEGA RS232, VEGA CONNECT (I2C) or VEGA CONNECT (HART) and VEGA Service HART
 - Profibus-PA sensors
 - VEGA RS232, VEGA CONNECT (I2C) and VEGA Service Profibus
- Make a connection between sensor (electronics) and service-DTM (go ONLINE)
- Load the previously saved file <Seriennummer>.xml into the service-DTM with „Options→Import data“
- As an alternative to importing the file <Seriennummer>.xml it will be possible to make the settings manually in the column “Required settings” (e.g. modification of the serial number)
- Carry out „Device data→Write data to device“
- If manual settings were made, the question is displayed, if sensor characteristics should be deleted; answer this question with **NO** if the sensor characteristics were not changed (e.g. if only the serial number was changed), if you answer the question with **YES**, all sensor characteristics will be deleted! It is only possible to restore them with a <Seriennummer>.xml file. A manual modification or restoring of the sensor characteristics is not possible!
- The ringing memory at the PULS or the empty vessel profile at the FLEX can be recreated (note the instructions in the DTM!)

Note: With FLEX, the cables/rods of which were shortened, it is necessary to determine the exact rod or cable length and to enter it in the service-DTM.

All settings carried out by the customer before exchanging the electronics can be transmitted by means of the real sensor-DTM and the function „Options→Import data“ to the instrument. However, these settings should have been saved before exchanging the electronics with the function „Options→Export data“.